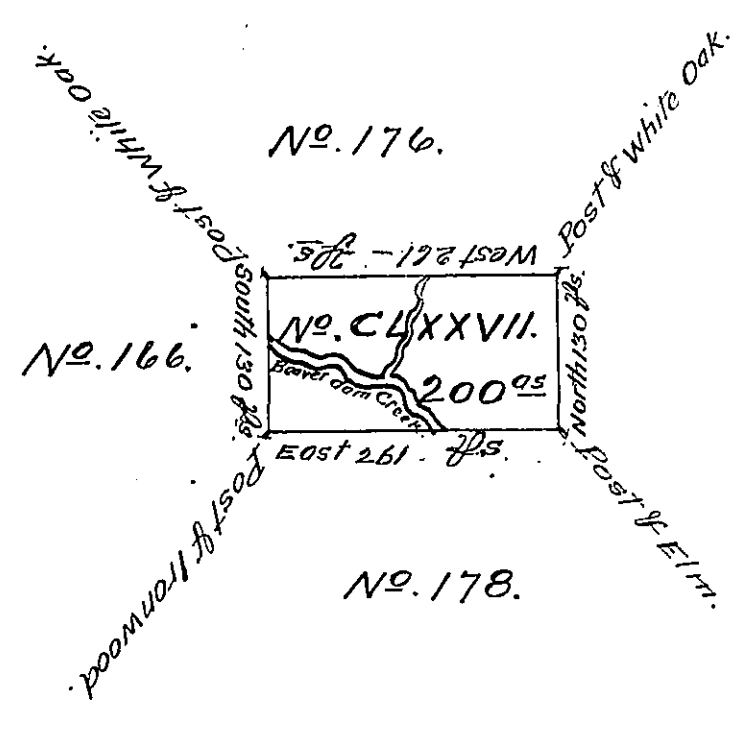


FORM NO 1.

Drawn on the 14
Decr. 1808 by
Mary Martin in
Trust for the
heirs of Geo.
Martin deed.



In pursuance of an Act of General Assembly of the State of Pennsylvania, passed the 24th day of February, 1785, entitled "An Act for directing the mode of distributing the donation lands promised the Troops of this Commonwealth; and by order of the Surveyor General with the approbation of the Honourable the Supreme Executive Council, I have surveyed on the tenth day of ^{November} ~~October~~ 1785, the above described Tract of Two Hundred acres of Land, and a allowance of six per cent. for roads &c. No. CLXXVII. situate in District No. 1. on the west side of the Allegany river, in the county of Westmoreland.

To John Lukens Esq. }
Surveyor General } William Alexander D.S.

IN TESTIMONY that the above is a copy of the original remaining on file in the Department of Internal Affairs of Pennsylvania, made conformably to an Act of Assembly approved the 16th day of February, 1833, I have hereunto set my Hand and caused the Seal of said Department to be affixed at Harrisburg, this fifteenth day of May 1908.

Henry Fowler
Secretary of Internal Affairs.